

CASHWRAP COUNTER DETAIL
BATH & BODY WORKS 3 REGISTER CASHWRAP

CASHWRAP & TELE/DATA SYSTEM NOTES

- REGISTERS SHALL SHARE A 20 AMP, 120 VOLT DEDICATED CIRCUIT WITH A SEPARATE ISOLATED & 3RD WIRE GROUND. STUB UP 3/4" CONDUIT 1" (A.F.F.) WHERE SHOWN ON DETAIL. INSTALL FLEXIBLE CONDUIT FROM STUB-UP TO JUNCTION BOX AND CONNECT TO DUPLEX RECEPTABLES. THE ELECTRICAL CONTRACTOR SHALL FURNISH ORANGE #85262 RECEPTABLES (HUBBELL). CUT AND PATCH FLOOR AS REQUIRED TO ROUTE CONDUIT TO WALL AS SHOWN. ROUTE UP INSIDE WALL TO CEILING SPACE AND CONNECT TO PANEL LOCATED INSIDE IFS ENCLOSURE. REFER TO POWER PLAN AND PANEL SCHEDULES FOR CIRCUIT DESIGNATIONS.
- 20 AMP, 120V, CIRCUIT FOR UTILITY POWER W/DUPLEX RECEPTABLE. STUB UP 3/4" CONDUIT 1" (A.F.F.) WHERE SHOWN ON DETAIL. INSTALL FLEXIBLE CONDUIT FROM STUB-UP TO JUNCTION BOX AND CONNECT TO DUPLEX RECEPTABLES. CUT AND PATCH FLOOR AS REQUIRED TO ROUTE UP INSIDE WALL TO CEILING SPACE AND BACK TO PANEL AS INDICATED ON POWER PLAN.
- STUB UP 3/4" CONDUIT 1" (A.F.F.). INSTALL FLEXIBLE CONDUIT FROM STUB-UP TO 4X4 JUNCTION BOX FOR DATA AND TELEPHONE. CUT AND PATCH FLOOR AS REQUIRED TO ROUTE CONDUIT TO WALL AS SHOWN. ROUTE UP IN WALL TO CEILING SPACE AND CONNECT TO TELECO STRUCTURE PORTION OF THE IFS ENCLOSURE. WIRE FOR DATA LINES TO BE PULLED AND CONNECTED BY P.O.S. CONTRACTOR.
- 3/4" TELEPHONE CONDUIT WITH PULLWIRE TO TELEPHONE BOARD BY ELECTRICAL CONTRACTOR. #RJ14C JACK ON LINES #1 AND #2 FOR TELEPHONE BY OTHERS.

GENERAL NOTES

- REFER TO ARCHITECTURAL SHEET A11.1 FOR ADDITIONAL INFORMATION.
- WIRING DEVICES ARE SHOWN FOR REFERENCE ONLY. COORDINATE FINAL INSTALLATION LOCATION WITH LSD&C PROJECT MANAGER IN FIELD.
- DATA TERMINALS AND CONNECTIONS BY P.O.S. CONTRACTOR.
- RUN METAL CLAD (MC) CABLE TO EACH RECEPTACLE FROM JUNCTION BOXES THRU WIREWAY WITHIN CASHWRAP COUNTER.
- WIRING FROM CONDUIT STUB-UPS TO JUNCTION BOXES ARE TO BE RUN IN FLEXIBLE CONDUIT.
- LABEL AND TAG ALL PULLWIRE RUNS AT EACH END WITH ORIGIN/DESIGNATION.
- IF FRONT PORTION OF CASHWRAP IS ADJACENT TO A WALL, CONTRACTOR SHALL ROUTE CONDUIT FROM THE BACKWRAP TO THE FRONT CASHWRAP THROUGH THE WALL ADJACENT TO CASHWRAP INSTEAD OF ROUTING THROUGH FLOOR.

CASHWRAP CA-4R

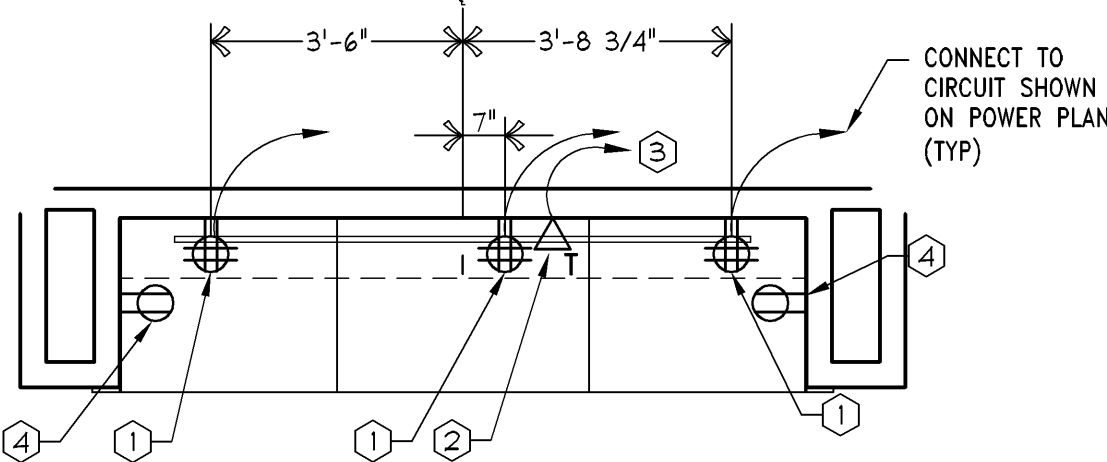
1/2" = 1'-0"

42D-E042-G01-CA4R

BACKWRAP P3-US

3/8" = 1'-0"

42D-E042-E05-P3B3



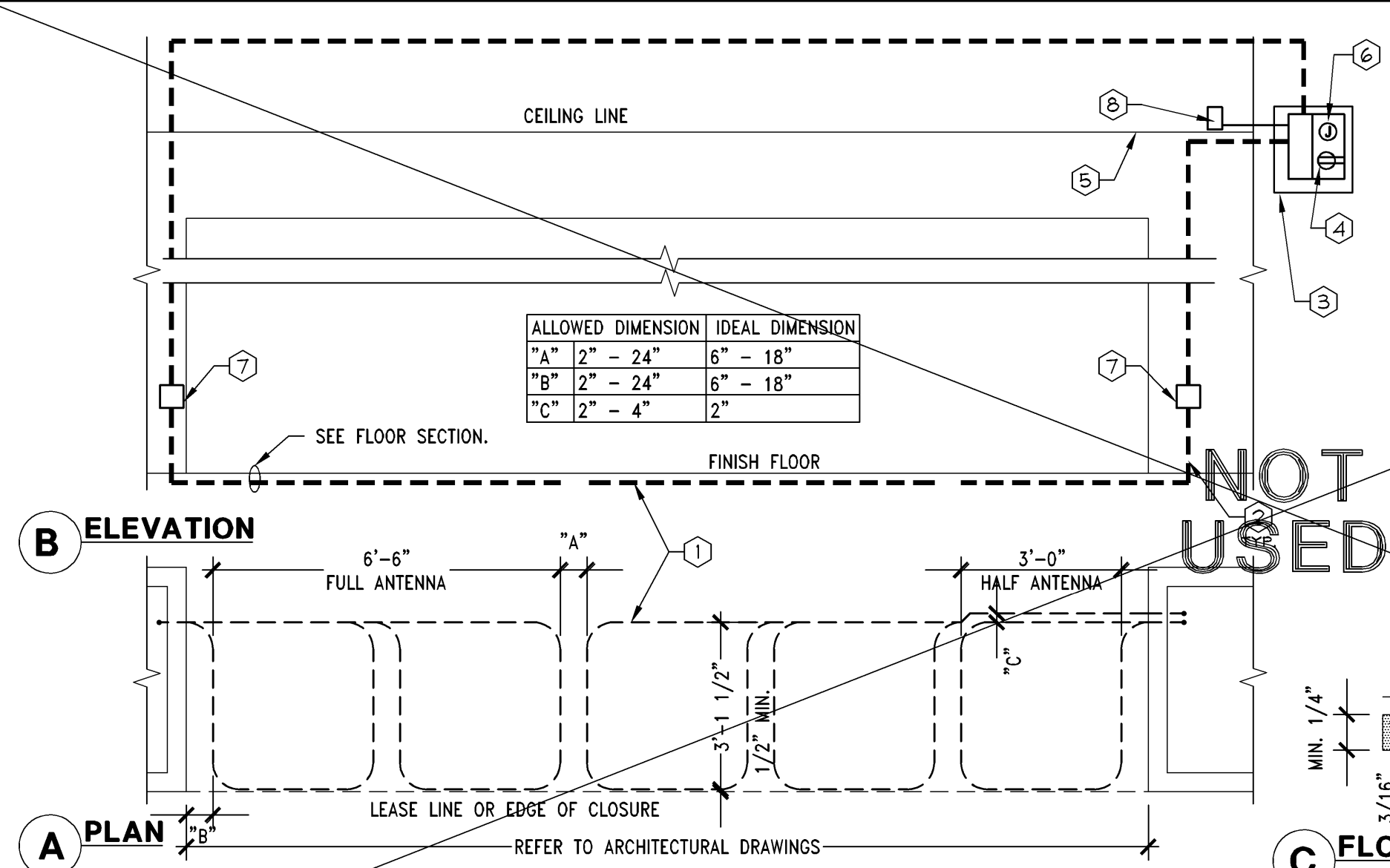
BACKWRAP COUNTER DETAIL

BACKWRAP & TELE/DATA SYSTEM NOTES

- 20 AMP, 120V, CIRCUIT FOR UTILITY POWER W/QUAD RECEPTACLE INSTALLED AT 12" A.F.F. DIRECTLY BEHIND CUTOUT IN BACKWRAP AND DUPLEX RECEPTACLE INSTALLED AT 39" A.F.F. ON SIDE WALLS. CONNECT TO CIRCUIT AS SHOWN ON POWER PLAN.
- TELEPHONE OUTLET ON INSIDE OF BACKWRAP UNIT INSTALLED AT 12" A.F.F. SEE NOTE (6). TELEPHONE WIRE AND #RJ14C JACK BY OTHERS.
- 3/4" TELEPHONE CONDUIT WITH PULLWIRE TO TELEPHONE BOARD BY ELECTRICAL CONTRACTOR. #RJ14C JACK ON LINES #1 AND #2 FOR TELEPHONE BY OTHERS.
- RECEPTACLE MOUNTED ABOVE COUNTERTOP. COORDINATE MOUNTING HEIGHT WITH MILLWORK VENDOR IN FIELD.

GENERAL NOTES

- REFER TO ARCHITECTURAL SHEET A11.1 FOR ADDITIONAL INFORMATION.
- WIRING DEVICES ARE SHOWN FOR REFERENCE ONLY. COORDINATE FINAL INSTALLATION LOCATION WITH LSD&C PROJECT MANAGER IN FIELD.
- DATA TERMINALS AND CONNECTIONS BY P.O.S. CONTRACTOR.
- LABEL AND TAG ALL PULLWIRE RUNS AT EACH END WITH ORIGIN/DESIGNATION.



SENSORMATIC SYSTEM - AMS2020 ANTENNA (ABOVE CEILING OR VOID SPACE)

3/8" = 1'-0"

05D-E0403-A00-SENS

NOTE:
CONTRACTOR MUST VERIFY AN UNOBSTRUCTED MINIMUM FREE AREA OF 3' VERTICALLY AND 3' WIDE IN EVERY DIRECTION ABOVE THE ACCESS PANEL TO ALLOW FOR INSTALLATION OF THE SENSORMATIC POWER PACK AND CAP ENCLOSURE BOXES. IF FREE AREA CANNOT BE OBTAINED IN THIS LOCATION, IMMEDIATELY CONTACT THE LSD&C PROJECT MANAGER FOR FURTHER INSTALLATION INSTRUCTIONS.

NOTE:
GENERAL CONTRACTOR SHALL COORDINATE THE INSTALLATION OF THE SENSORMATIC SYSTEM WITH SENSORMATIC MANUFACTURER SPECIFICATIONS AND INSTALLATION GUIDE.

NOTE:
PROVIDE 3/4" CONDUIT BETWEEN ALL DEVICES IN THE SYSTEM IF LOCAL CODE REQUIRES ALL LOW VOLTAGE WIRE TO BE IN CONDUIT.

NOTE:
DO NOT COIL EXCESS WIRE OR CABLE IN CEILING. DOING SO WILL CAUSE FALSE ALARMS.

NOTE:
THIS IS A DIAGRAMATIC DETAIL. REFER TO FLOOR PLAN FOR ACTUAL QUANTITY AND LAYOUT OF LOOPS.

NOTE:
WHEN HALF ANTENNAS ARE USED, EACH HALF ANTENNA SHALL BE PAIRED WITH A FULL ANTENNA. HALF ANTENNAS SHALL NEVER BE INSTALLED ALONE.

SENSORMATIC FLOOR ANTENNA SYSTEM NOTES

- BRACKETS / TRANSCIVER CABLES.
- ROUTE CABLES FROM BELOW FINISH-FLOOR UP WALL TO CAP ENCLOSURE BOX. CABLES ABOVE CEILING SHALL BE ROUTED CLEAR OF ACCESS OPENINGS.
- GC TO MOUNT 24"x24" PLYWOOD PANEL ABOVE CEILING OR IN FULLY ACCESSIBLE STOREFRONT VOID AREA AT 48" AFF FOR EQUIPMENT MOUNTING. USE FR1 PLYWOOD IF REQUIRED BY CODE.
- DUPLEX RECEPTACLE IN NEMA 1 ENCLOSURE, SIZED PER CODE, LOCATED ON PLYWOOD PANEL. ELECTRICAL REQUIREMENTS ARE 120V, AC, THREE WIRE, 24 HOUR DEDICATED CIRCUIT WITH LESS THAN 0.5V, AC BETWEEN NEUTRAL AND GROUND.
- RETURN AIR GRILLE, ACT CLG., OR ACCESS PANEL TO BE USED FOR SERVICING OF EQUIPMENT WHEN LOCATED ABOVE CEILING. COORDINATE LOCATION WITH THE GENERAL CONTRACTOR. GRILLE/ACCESS PANEL MUST BE 24" BY 24" MINIMUM.
- JUNCTION BOX ON PLYWOOD PANEL WITH 120V, AC POWER FOR FINAL CONNECTION TO SENSORMATIC POWER PACKS. INSTALLATION OF POWER PACKS AND PLUG-IN OF PACKS TO RECEPTACLE BY SENSORMATIC.
- CAP BOX ENCLOSURE, DISTANCE FROM CAP ENCLOSURE TO ANTENNA SHALL BE MAX 20". MOUNT CAP BOX ABOVE CEILING OR IN ACCESSIBLE STOREFRONT VOID AREA WHEN POSSIBLE. OTHERWISE MOUNT AT 18" AFF AND COMPLETELY CONCEAL IN WALL WITH 12"x12" ACCESS PANEL. MAXIMUM LENGTH FROM CAP ENCLOSURE TO THE CONTROLLER/POWER PACK IS 40' OF CABLE.
- REMOVE ALARM, GC TO ENSURE A RETURN AIR GRILLE OR SPEAKER SCREEN IS INSTALLED IN THE CEILING NEAR BY TO ALLOW TRANSMISSION OF SOUND. ALARM SHALL NOT BE VISIBLE THROUGH GRILLE OR SCREEN.

PROJECT INFORMATION:

014200814

BATH & BODY WORKS
WHITE BARN CANDLE CO.
THE GARDENS MALL
3101 PGA BOULEVARD
PALM BEACH GARDENS, FL 33410

SCOPE: DESIGN TYPE: LSD&C PROJECT #:
FULL REND PACKAGE: EASTON-C GENERATION: A/E PROJECT #:
141SD 142861

REVISIONS:
OWNER & LANDLORD COMMENTS 12/31/14
L.L. COMMENT - MECHANICAL REQUIREMENTS 1/16/2015

ELITE CONSTRUCTION GROUP
LAKE JACKSON, TX
PHONE: 979-285-0712
NOTE: THESE PRINTS HAVE BEEN REDUCED BY 50 PERCENT. SCALE WILL BE 50 PERCENT OF WHAT IS NOTED ON PLANS

DATE ISSUED: 10/24/2014
DESIGNED BY: ARW
DRAWN BY: ARW
CHECKED BY: ATF

ELECTRICAL
DETAILS

DRAWING NUMBER:

E04.03